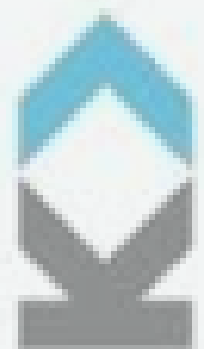


AI with KI

Kirsty Ingleson

Kirklees College



KIRKLEES
COLLEGE


What is AI

AI refers to the intelligence of machines.

AI, or artificial intelligence, is like giving a computer the ability to learn and make decisions like humans do.

Instead of being programmed with specific instructions for every task, AI systems learn from data. They use this data to recognise patterns, make predictions, and solve problems.





How it works

An example of AI and how it works is: we might give a computer lots of pictures of cats and dogs and tell it which ones are cats and which ones are dogs. Then, the computer can learn to recognise cats and dogs in new pictures it hasn't seen before.

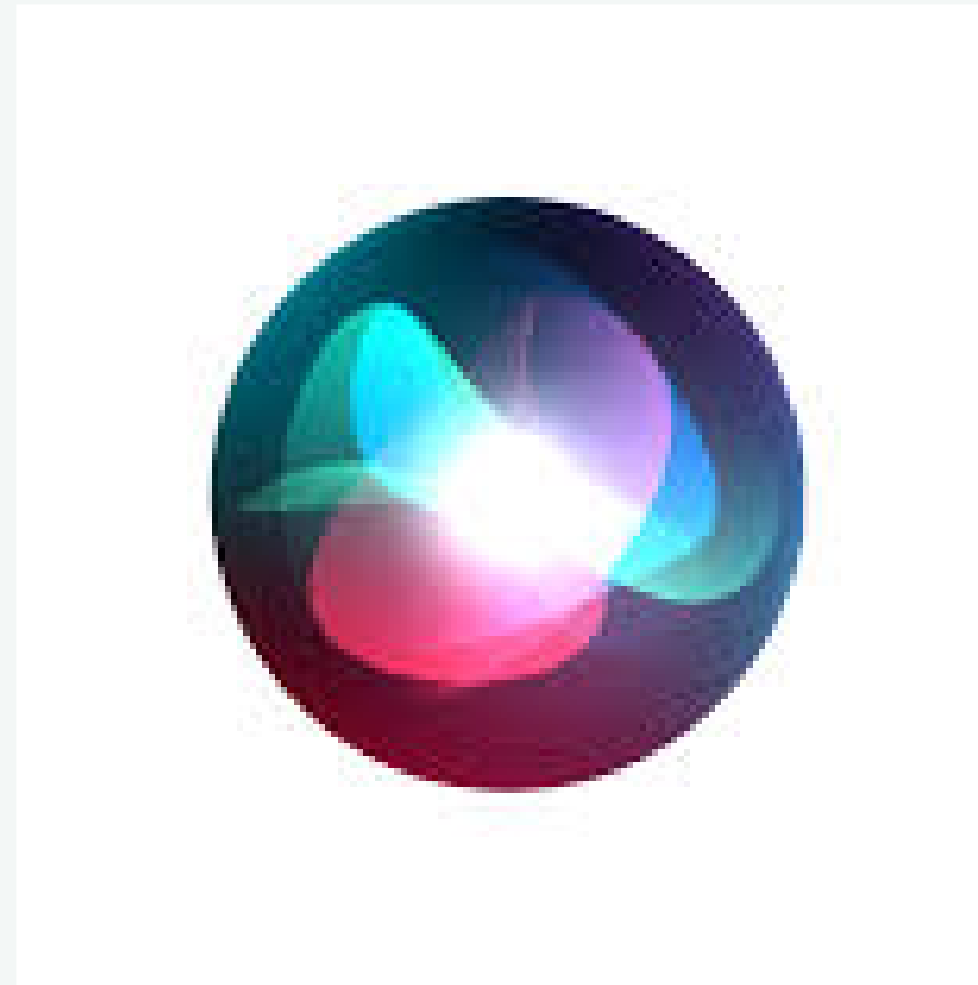
It's like teaching the computer to recognise patterns



The AI that lives beside us everyday



The AI that lives beside us everyday





The good



AI is for everyone

These examples are generative ai)

The logo for Claude, featuring a stylized orange asterisk-like symbol to the left of the word "Claude" in a black, monospace-style font.The logo for Udio, consisting of the word "udio" in a white, lowercase, sans-serif font on a black rectangular background.The logo for ChatGPT, featuring a green square icon with a white interlocking knot design to the left of the text "ChatGPT" in a bold, black, sans-serif font.The logo for Google NotebookLM, featuring the word "Google" in its multi-colored font above the text "NotebookLM" in a white, sans-serif font, all on a black rectangular background.



Real or fake?





Real or fake?





Real or fake?





Real or fake?

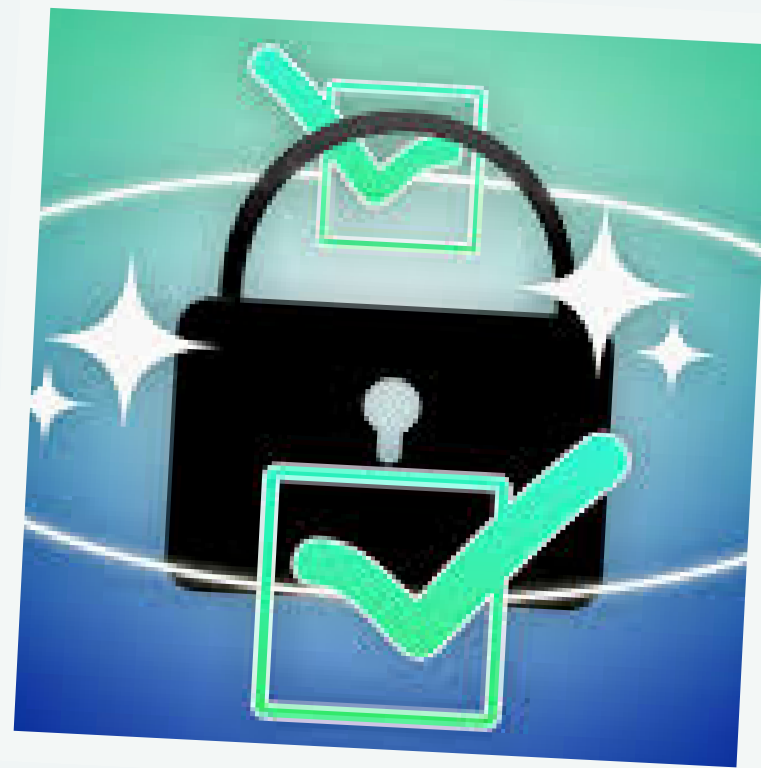
Parachute



some things to be aware of



Voice training



Your Data



Bias



Our future



Thank you so much!



Kirsty Ingleson



aiwithki



AI with KI